

ASL 5000[®] Lung Solution



Make Your SimMan, Nursing Anne and SimBaby Ventilator Ready!

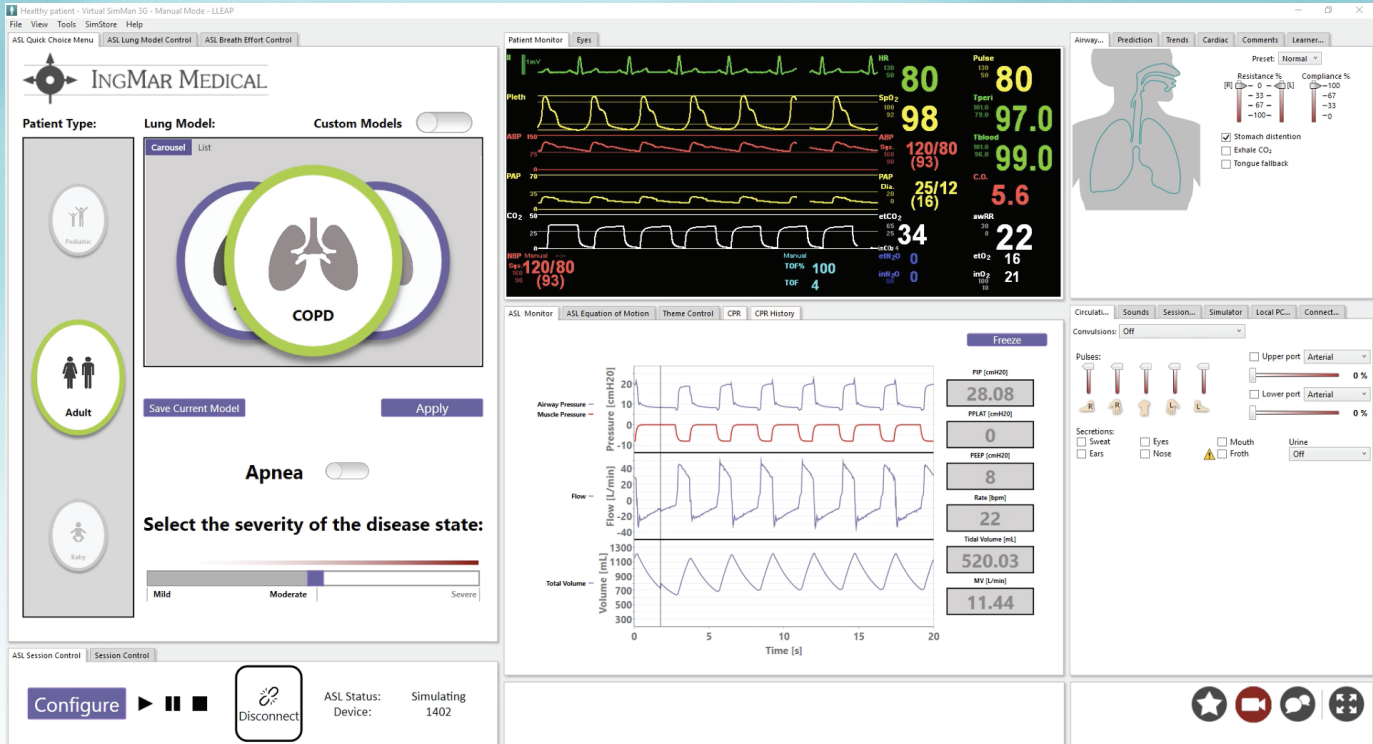


Imagine being able to use your Laerdal manikin to conduct training with a spontaneously breathing patient supported by your own real ventilators and respiratory devices.

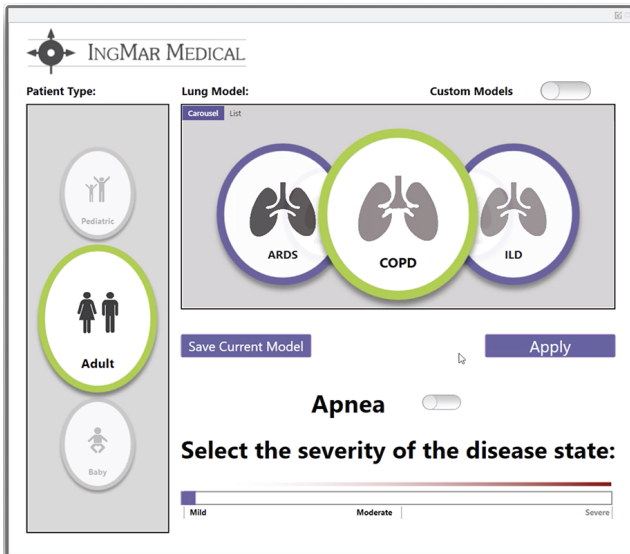
Introducing the ASL 5000[®] Lung Solution. Developed in collaboration with Laerdal, the solution enables you to integrate IngMar Medical's ASL 5000 Breathing Simulator with the SimMan[®] portfolio, Nursing Anne Simulator and SimBaby[™].

The ASL 5000 is the world's premier breathing simulator. It can breathe spontaneously and hold PEEP at virtually any level. Resistance and compliance are minutely adjustable, allowing you to simulate a vast number of patient disease states with realistic ventilator response.

Manage both the ASL 5000 and the compatible Laerdal manikin directly from the Laerdal Learning Application (LLEAP). The ASL 5000 becomes the new lungs of the compatible manikin, so you can conduct high-fidelity ventilation management training in anesthesia, critical care, emergency medicine, pulmonology, respiratory care, and neonatology.



The IngMar plug-in seamlessly integrates into Laerdal's LLEAP Interface. It enhances the view familiar to current users with real-time ventilation waveforms. Users can select different patient types and disease states with a few clicks.



Keep it simple and select a preprogrammed disease state, or customize by adjusting airway resistance, lung compliance, breath rate, and patient effort.

Introduce spontaneous breathing by adjusting the patient's muscle pressure and breath rate.



ISO 9001:2015 Certified and ISO/IEC 17025:2017 accredited
SimMan® and SimBaby™ are a registered trademark of Laerdal Medical.

412.441.8228

Toll Free:

800.583.9910

5940 Baum Boulevard
Pittsburgh, PA 15206 USA
www.ingarmed.com
sales@ingarmed.com

©2022 IngMar Medical, LLC | 10-22